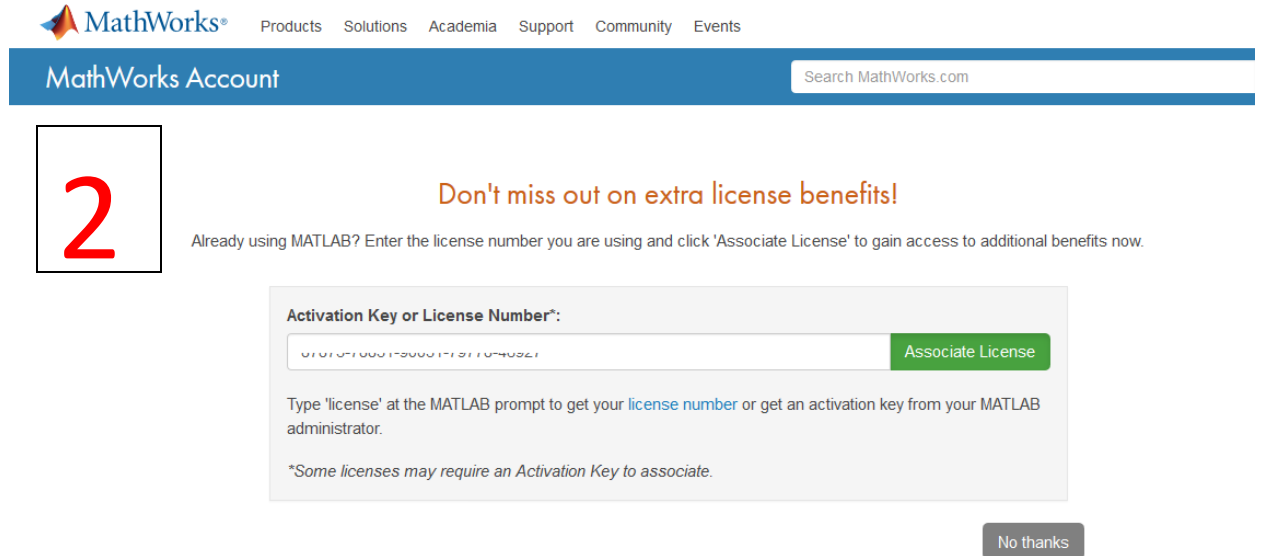


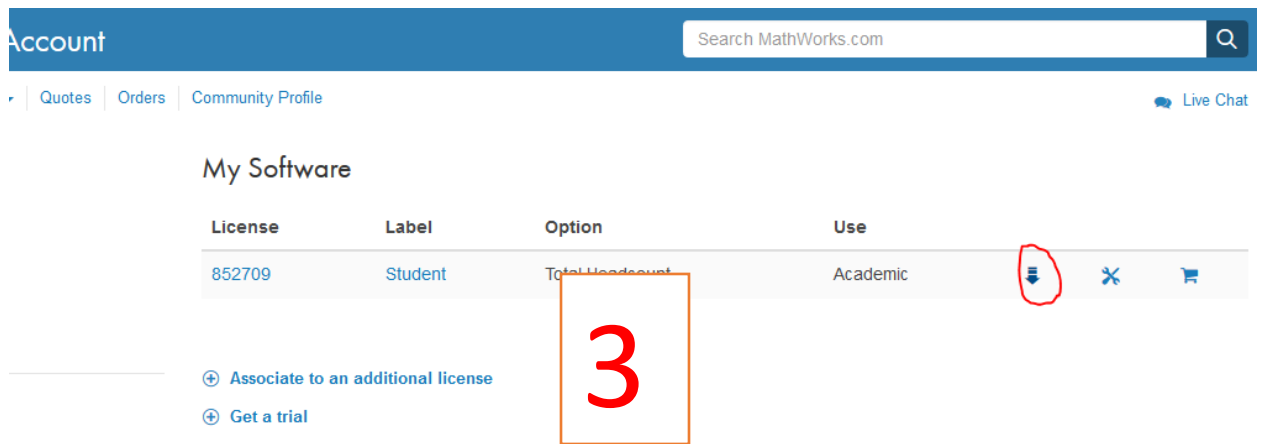
Matlab Installation Steps

- 1) Create a **MathWorks Account** using your university email address: mathworks.com/accesslogin/createProfile.do
- 2) Go to the **License Center**: mathworks.com/licensecenter

Enter license number (xxxxx-xxxxx-xxxxx-xxxxx-xxxxx) and click on **“Associate License”**



The screenshot shows the MathWorks Account page. At the top, there is a navigation bar with the MathWorks logo and links for Products, Solutions, Academia, Support, Community, and Events. Below this is a blue header with 'MathWorks Account' and a search bar. The main content area features a large red number '2' in a box on the left. To the right, there is a heading 'Don't miss out on extra license benefits!' and a sub-heading 'Already using MATLAB? Enter the license number you are using and click 'Associate License' to gain access to additional benefits now.' Below this is a form titled 'Activation Key or License Number*:' with a text input field containing a placeholder license number and a green 'Associate License' button. Below the form, there is a note: 'Type 'license' at the MATLAB prompt to get your license number or get an activation key from your MATLAB administrator.' and a footnote: '*Some licenses may require an Activation Key to associate.' At the bottom right of the form area, there is a 'No thanks' button.



The screenshot shows the MathWorks Account page with the 'My Software' section. At the top, there is a blue header with 'Account' and a search bar. Below this is a navigation bar with links for Quotes, Orders, and Community Profile, and a 'Live Chat' button. The 'My Software' section contains a table with the following columns: License, Label, Option, and Use. The table has one row with the following data: License: 852709, Label: Student, Option: Total Headcount, Use: Academic. To the right of the table, there are three icons: a downward arrow (circled in red), a close icon (X), and a trash icon. Below the table, there are two links: '+ Associate to an additional license' and '+ Get a trial'. A large red number '3' is in a box over the table.

License	Label	Option	Use
852709	Student	Total Headcount	Academic

Downloads

Download R2017a

Download earlier release



R2017a

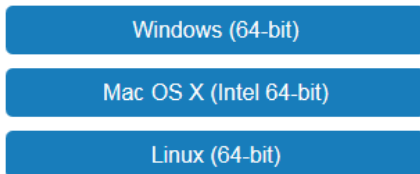
Downloads

Download R2017a Installer

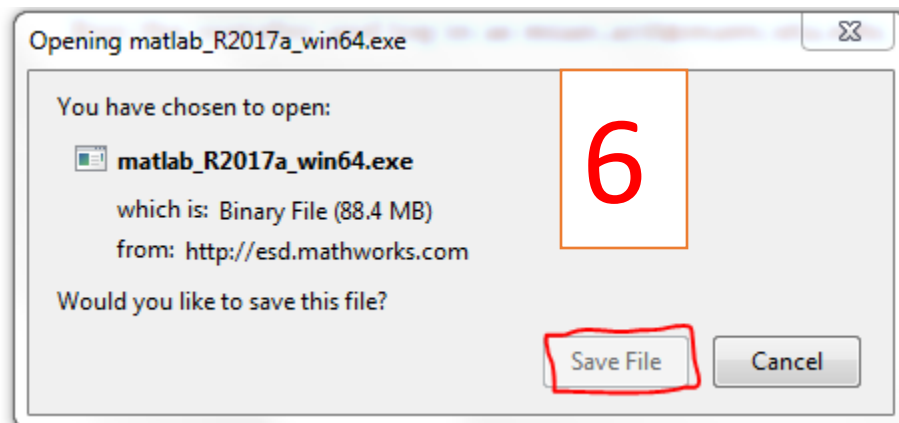
1. Choose Installer

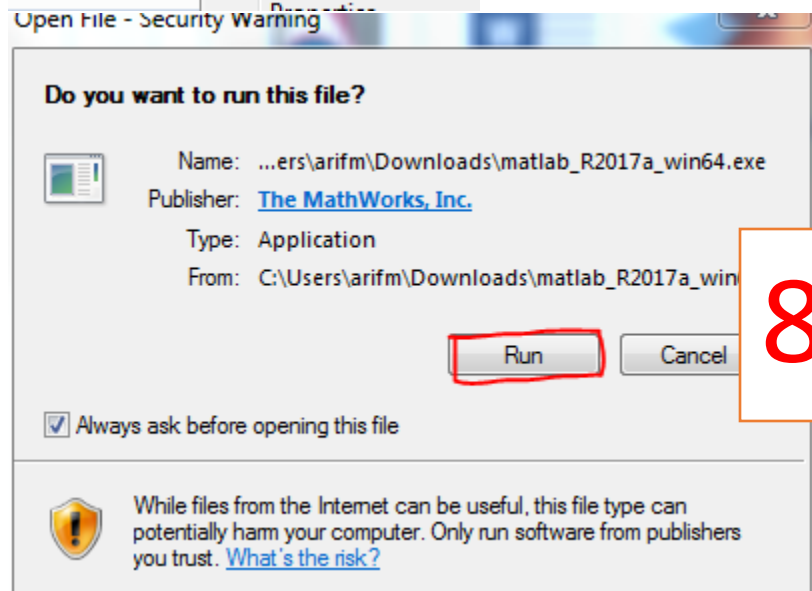
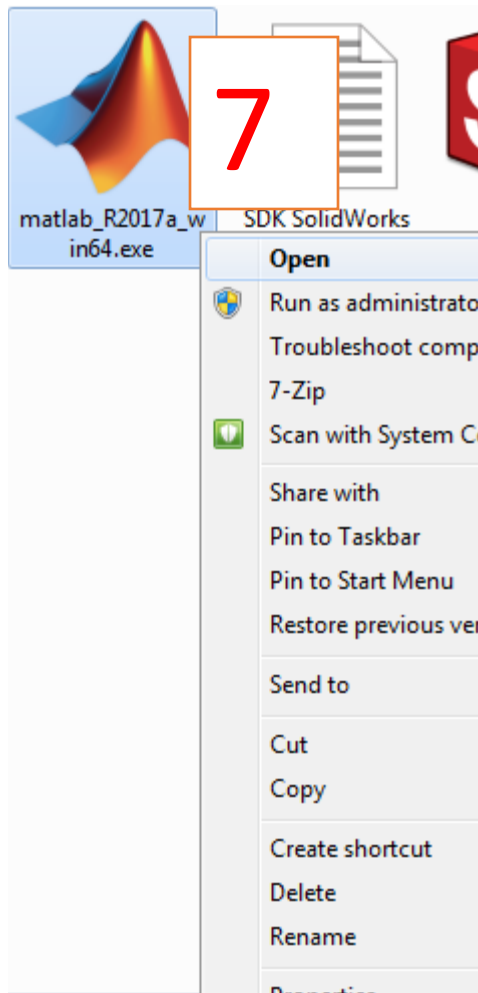
2. Download product files

5



Run the installer and log in as mian.arif@mavs.uta.edu.





MathWorks Installer

Select installation method

Log in with a MathWorks Account Connection Settings

Requires an Internet connection

Use a **File Installation Key** [What is this?](#)


No Internet connection required

9

MathWorks products are protected by patents (see mathworks.com) and copyright laws. By entering into the Software License Agreement that follows, you will also agree to additional restrictions on your use of these programs. Any unauthorized use, reproduction, or distribution may result in civil and criminal penalties.

MATLAB and Simulink are registered trademarks of The MathWorks, Inc. Please see mathworks.com/trademarks for a list of additional trademarks. Other product or brand names may be trademarks or registered trademarks of their respective holders.

< Back Next > Cancel Help



License Agreement

The MathWorks, Inc. Software License Agreement

IMPORTANT NOTICE

THIS IS THE SOFTWARE LICENSE AGREEMENT (THE "AGREEMENT") OF THE MATHWORKS, INC. ("MATHWORKS") FOR THE PROGRAMS. THE PROGRAMS ARE LICENSED, NOT SOLD. READ THE TERMS AND CONDITIONS OF THIS AGREEMENT CAREFULLY BEFORE COPYING, INSTALLING, OR USING THE PROGRAMS. FOR INFORMATION ABOUT YOUR LICENSE OFFERING, CONSULT THE PROGRAM OFFERING GUIDE PRESENTED AFTER THE AGREEMENT.

THE AGREEMENT REPRESENTS THE ENTIRE AGREEMENT BETWEEN YOU (THE "LICENSEE") AND MATHWORKS CONCERNING YOUR RIGHTS TO INSTALL AND USE THE PROGRAMS UNDER THE LICENSE OFFERING YOU ACQUIRE.


YOU MUST ACCEPT THE TERMS OF THIS AGREEMENT TO COPY, INSTALL, OR USE THE PROGRAMS. IF YOU DO NOT ACCEPT THE LICENSE TERMS, THEN YOU MUST IMMEDIATELY STOP USING

IF YOU TERMINATE THIS LICENSE FOR ANY REASON WITHIN THIRTY (30) DAYS OF THE DATE OF ACCEPTANCE (THE "ACCEPTANCE PERIOD") YOU WILL RECEIVE A FULL REFUND FROM THE AUTOMATICALLY FROM WHOM YOU ACQUIRED THE PROGRAMS OR FROM MATHWORKS IF YOU ACQUIRED THE PROGRAMS FROM MATHWORKS.

10

Do you accept the terms of the license agreement? Yes No

< Back Next > Cancel Help



11

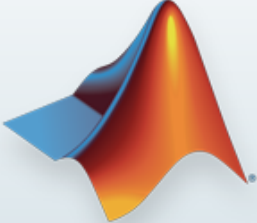

Sign in to your MathWorks Account

Address:

Password:

[Forgot your password?](#)

Create a MathWorks Account (requires an Activation Key)



< Back Next > Cancel Help MathWorks

License Selection

Select a license or enter an Activation Key

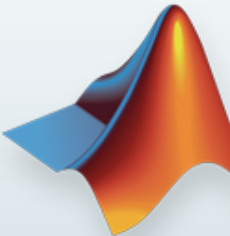

The installer will determine which products to install based on your license.

Select a license:

License	Label	Option
852709	Student	Academic - Total Headcount

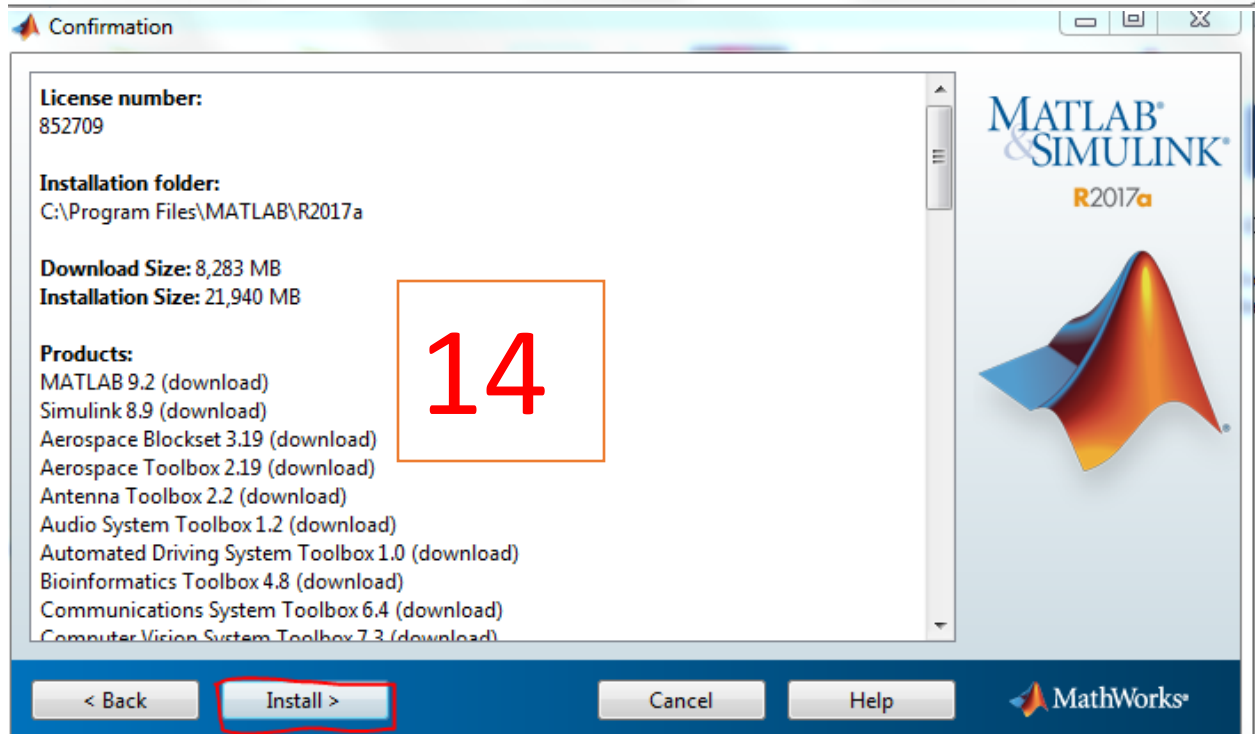
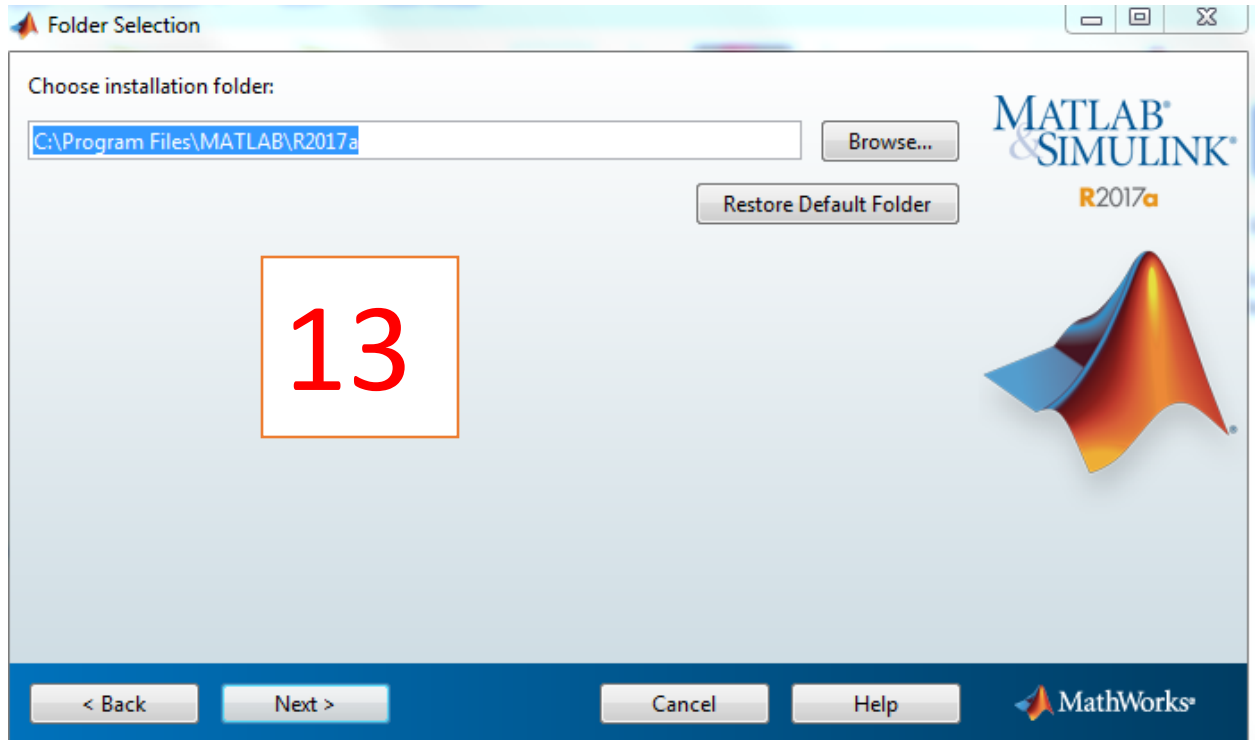
Enter an Activation Key for a license not listed:

You may have received the [Activation Key](#) from the Administrator of the license.



< Back Next > Cancel Help MathWorks

12



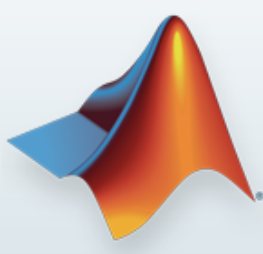
Product Configuration Notes

Your installation may require additional configuration steps.

1. The following products require a [supported compiler](#):
Simulink Coder 8.12
Simulink Real-Time 6.6
MATLAB Coder 3.3
2. MATLAB Compiler 6.4 requires a [supported compiler](#) for creation
3. MATLAB Compiler SDK 6.3.1 requires the following:
 - [.NET framework](#) for creation of .NET assemblies and deployable archives with Excel integration
 - a [supported compiler](#) for creation of COM components, C and C++ Shared libraries
 - a [Java JDK](#) for creation of Java packages

15

MATLAB® & SIMULINK®
R2017a



< Back **Next >** Help MathWorks®

Installation Complete

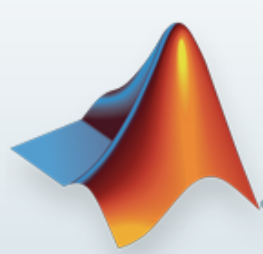
Installation is complete.

Activate MATLAB

Note: You will not be able to use MATLAB until you activate the software.

16

MATLAB® & SIMULINK®
R2017a



See the [Help](#) to learn more about activation.


< Back **Next >** Cancel MathWorks®

MathWorks Software Activation

Activate MathWorks Software

Activation is a process that verifies licensed use of MathWorks products. This process validates the license and ensures that it is not used on more systems than allowed by the license option you have acquired.

MATLAB® & SIMULINK®
ACTIVATION
R2017a



17

< Back **Next >** Cancel Help MathWorks®

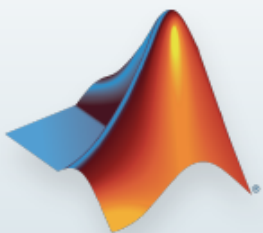
User Name

Provide user name

Only one person can use this license. Specify the Licensed End User.

Windows User Name:

MATLAB® & SIMULINK®
ACTIVATION
R2017a



18

< Back **Next >** Cancel Help MathWorks®

