


Matlab Installation Steps

- 1) Create a **MathWorks Account** using your university email address: mathworks.com/accesslogin/createProfile.do
- 2) Go to the License Center: mathworks.com/licensecenter

Enter license number (xxxxx-xxxxx-xxxxx-xxxxx-xxxxx) and click on **"Associate License"**

 **MathWorks®** Products Solutions Academia Support Community Events

MathWorks Account

2

Don't miss out on extra license benefits!

Already using MATLAB? Enter the license number you are using and click 'Associate License' to gain access to additional benefits now.

Activation Key or License Number*:




Type 'license' at the MATLAB prompt to get your [license number](#) or get an activation key from your MATLAB administrator.

**Some licenses may require an Activation Key to associate.*

Account

[Quotes](#) [Orders](#) [Community Profile](#) [Live Chat](#)

My Software

License	Label	Option	Use	
852709	Student	Total Headcount	Academic	<div><div>3</div><div>  </div></div>

[+ Associate to an additional license](#)
[+ Get a trial](#)

Downloads

Download R2017a

Download earlier release

R2016b
R2016a
R2015b
R2015aSP1
R2015a

R2017a

4



Downloads

Download R2017a Installer

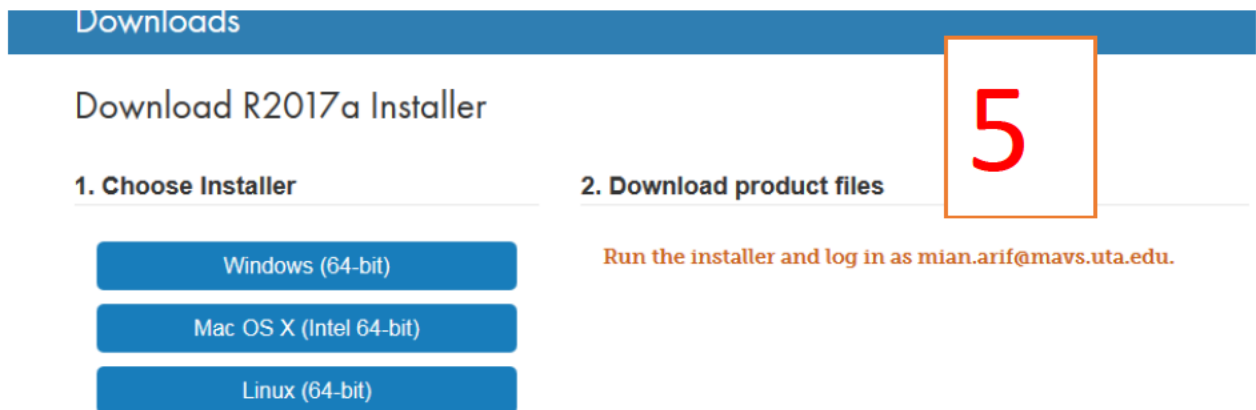
1. Choose Installer

2. Download product files

Windows (64-bit)
Mac OS X (Intel 64-bit)
Linux (64-bit)


Run the installer and log in as mian.arif@mavs.uta.edu.

5



Opening matlab_R2017a_win64.exe

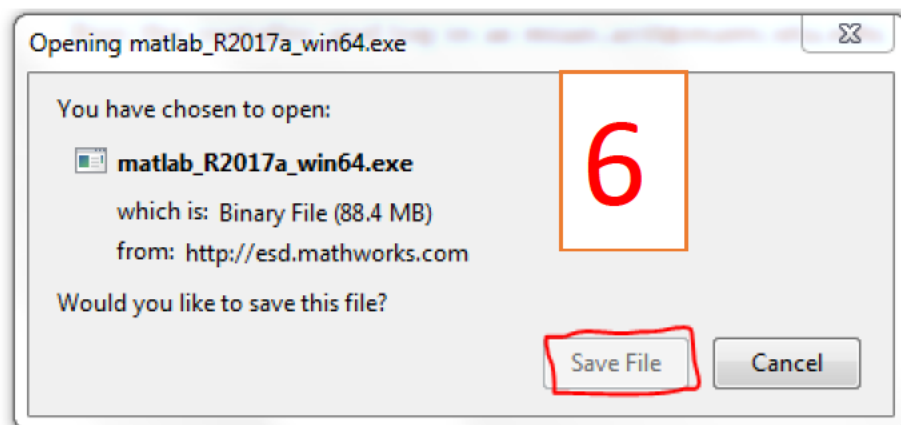
You have chosen to open:

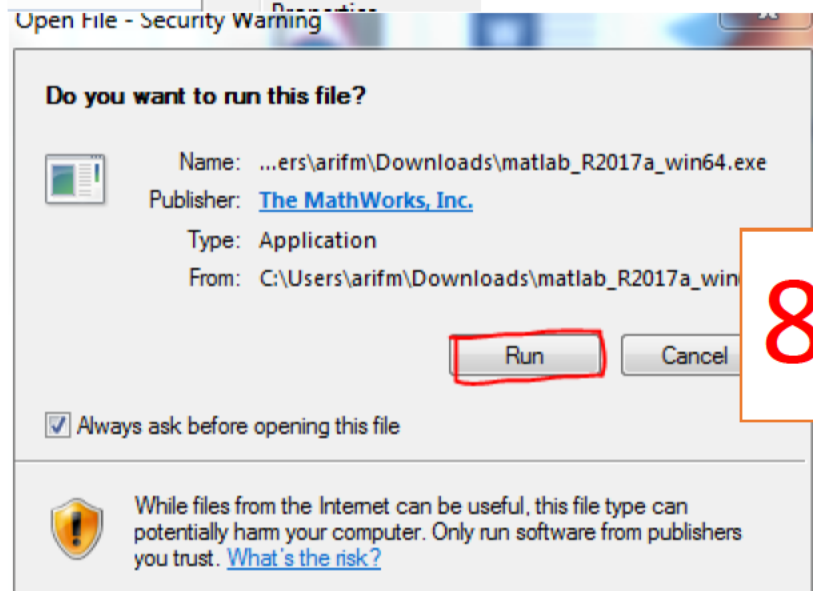
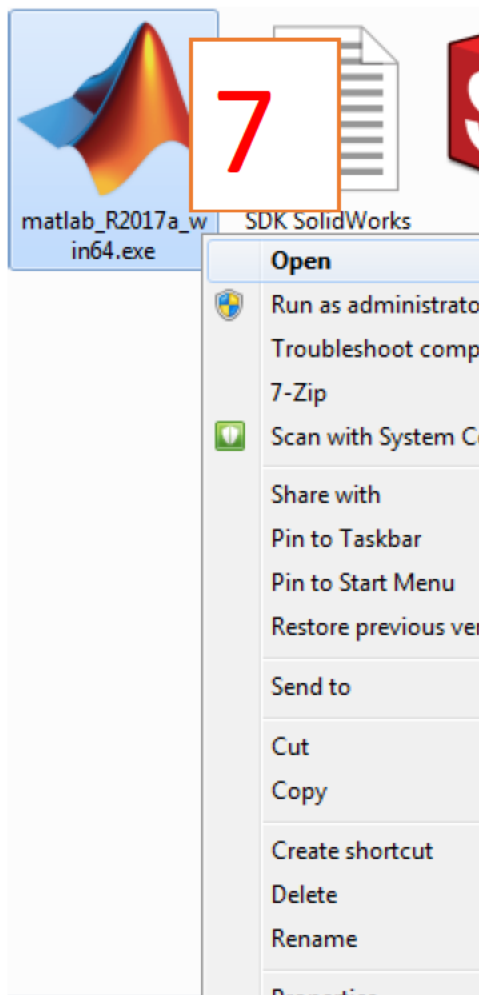
 **matlab_R2017a_win64.exe**
which is: Binary File (88.4 MB)
from: <http://esd.mathworks.com>

Would you like to save this file?

Save File Cancel

6





11

Log in to your MathWorks Account

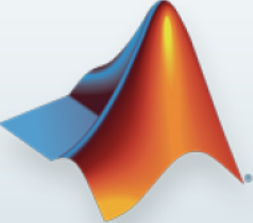
Email Address:

Password:

[Forgot your password?](#)

☐ Create a MathWorks Account (requires an Activation Key)

MATLAB® & SIMULINK®
R2017a



< Back Next > Cancel Help MathWorks®

License Selection

Select a license or enter an Activation Key

The installer will determine which products to install based on your license.

☒ Select a license:

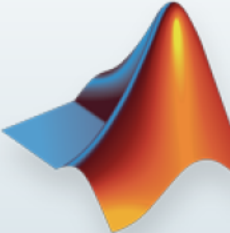
License	Label	Option
852709	Student	Academic - Total Headcount

12

☐ Enter an Activation Key for a license not listed:

You may have received the [Activation Key](#) from the Administrator of the license.

MATLAB® & SIMULINK®
R2017a



< Back Next > Cancel Help MathWorks®

