

Detailed Installation Procedure:

- Go to www.solidworks.com/SEK
- In the student Access Form, enter the SDK-ID as [REDACTED]
- Fill out the remaining details appropriately.
 - Choose that you are a student.
 - Enter the school name as **University of Texas at Arlington**.
 - Select the version as **2018-2019**.
 - Use your **@mavs.uta.edu** email only.

The screenshot shows a web browser window with the URL www.solidworks.com/sw/education/SDL_form.html. The page is titled "SOLIDWORKS Community Download Instructions" and provides instructions for qualified educators, makers, hobbyists, military, students, and sponsored organizations. The form includes a language dropdown set to "English", a checkbox for "I already have a Serial Number that starts with 9020:" (with "No" selected), and a field for "SDK ID, SEK ID, or Trial Code:" which is redacted. Below this, there is a "Version:" dropdown set to "2018-2019", an "Email Address:" field which is redacted, and a "Please Select one of the following:" dropdown set to "Student". A "Request Download" button is at the bottom of the form. The page also features a sidebar with navigation links for various industries and a top navigation bar with links for "Products & Solutions", "Choosing SOLIDWORKS", "Community", "Support", and "How to".

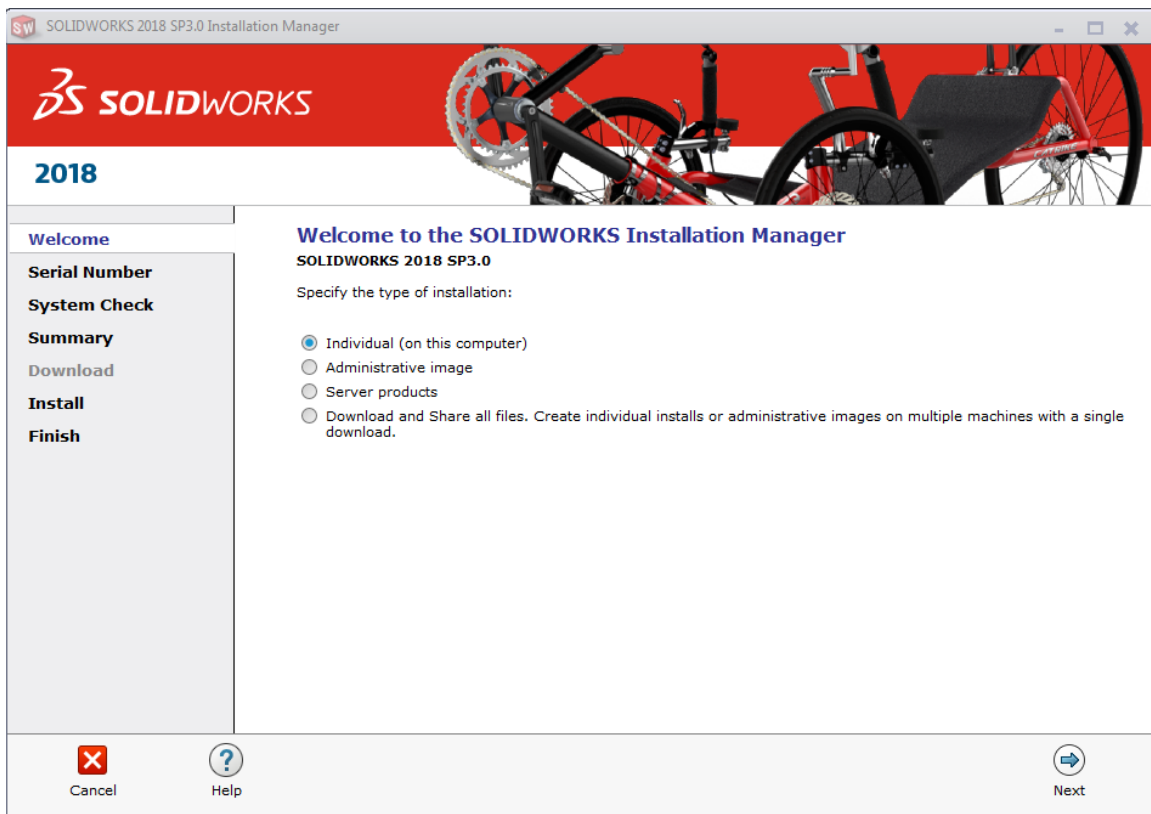
- On the next page read & accept the agreement and proceed.
- Use the download link on the next page. After clicking the appropriate link for your requested Student Access product, you will be asked to download **SolidWorks Installation Manager** (about 20 MB).
- Run the SolidWorks Installation Manager, which will guide you through the complete download and installation process.
- When the download is complete, click UNZIP then follow the installation instructions.

- Meanwhile, you will receive a confirmation email from SolidWorks <EducationDept@solidworks.com> to your mailbox with the 'Download and Installation information' and an Activation Serial Number.
- Enter the SolidWorks Serial # from the mail in the Installation Manager to complete the installation.

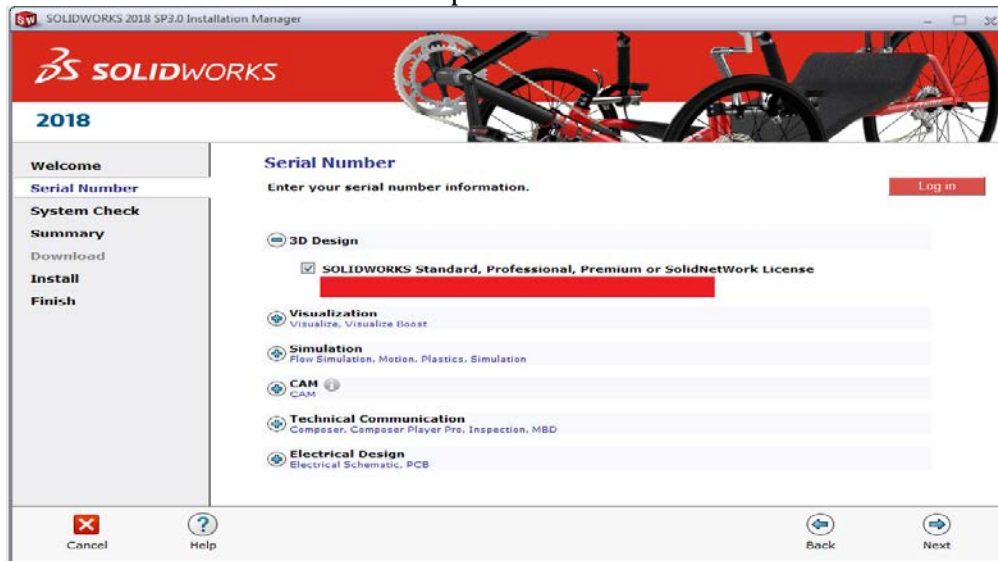


Installation Manager:

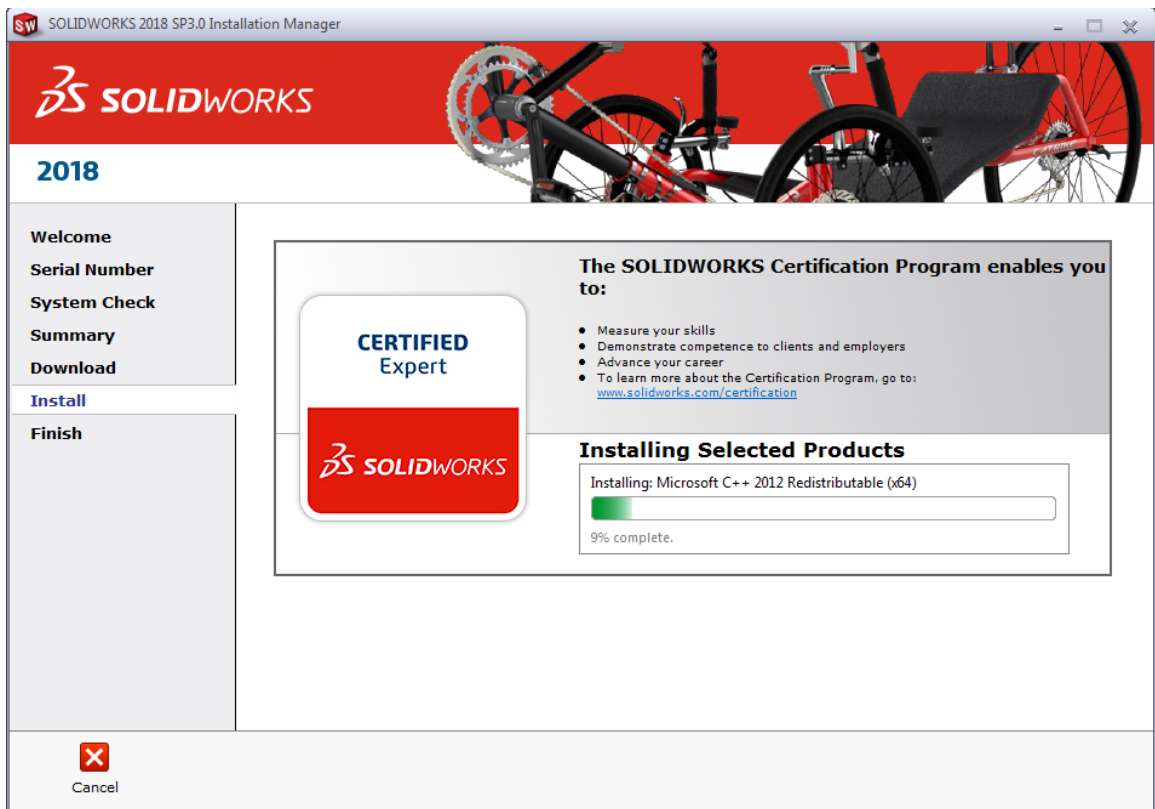
- Run the installation manager.
- Select *Individual (on this computer)* and click *Next*.



- Enter the serial numbers for the products to install.



- After clicking next on this screen, if you get a notification that there is a newer version available, click *"No, I'd like to continue installing..."* and click *Next*.
- The summary page lists the default settings for an installation. Products to be installed are determined by the serial number entered. Go through and click *'Install Now'* and the installation starts.



- After installation has completed, you get to decide whether to see What's New in SOLIDWORKS 2018 (select the checkbox) and you get to decide whether to be part of the SolidWorks performance feedback loop by selecting *'Yes, I want to join'*. Select *'Finish'*.