

Subject: Slate: Graduate Application & Recruitment newsletter issue #3
Date: Thursday, December 21, 2023 at 10:16:49 AM Central Standard Time
From: CRM Grad Program



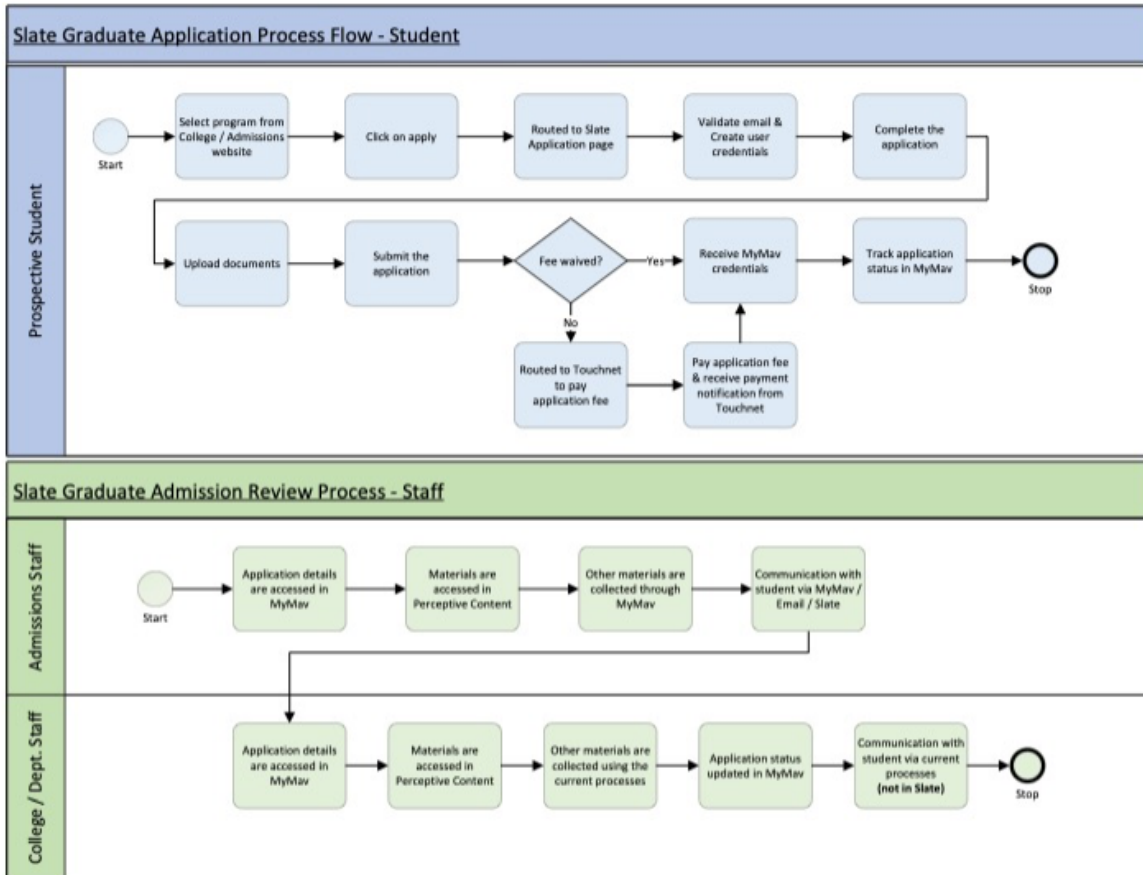
HAPPY HOLIDAYS FROM THE CRM TEAM

Happy Holidays from the CRM team! With this last newsletter for 2023, we want to wish you a warm and restful holiday season. We are excited to return in the new year to tackle new challenges and the opportunity to share exciting Slate updates.

SLATE GRADUATE APPLICATION PROCESS FLOW

[Click the image to enlarge](#)

Slate Graduate Application Processes



To help break down this complex project, the implementation of a [graduate Slate application](#) will be known as [Project 1](#). Our goal is to have graduate students applying through Slate by February 2024. The image above showcases the Slate application steps and internal review process flow, which have been approved by leaders and stakeholders of this project.

Please note that academic programs **will not** be accessing all Slate features in February and will need to continue to use MyMav for this first phase. Prospective students will complete the Slate application as defined in the process flow above.

HOW WILL PROGRAMS ACCESS APPLICANT INFORMATION?

During Project 1, Slate will operate a one-way integration with MyMav and Perceptive

Content. This means that UTA staff will access graduate applications, transcripts, and recommendation letter(s) in MyMav and Perceptive Content. Programs will utilize their standard review and decision business procedures as we continue to integrate these systems into Slate.

FEBRUARY 2024: SLATE AND APPLYTEXAS

In February 2024, **both ApplyTexas and Slate application options** will be available concurrently to prospective students. As we progress through [implementation phases](#), Slate will become the exclusive admittance application portal.

OTHER PROJECT UPDATES

The project team began engaging with the [Slate champions](#) to confirm and validate information that will be utilized in Slate program applications. Slate champions were asked to validate the following program information:

- Program name(s) as they appear to applicants.
- Program location: UTA, UTA Fort Worth, or another location.
- Program thesis or non-thesis requirement.
- Program start term.

If you would like to opt in to receive this biweekly newsletter, or if you would like to be removed from our recipient list, email crmgradprogram@uta.edu with your request. All newsletter issues are archived on the [Slate CRM: Graduate Recruitment](#) project page.



Sent on behalf of the Office of the Provost and Senior Vice President for Academic Affairs
crmgradprogram@uta.edu | Project site: [Slate CRM: Graduate Recruitment](#)